



INTERIOR FEATURES

Interior Features — The interior of your new Revcon motorhome has been designed for easy contemporary living. Coordination of texture and color are all a part of the smartly styled interior features, that promise long wear and easy maintenance.

The entire floor area is covered with high quality cut pile carpeting, for comfort and warmth.

The ceiling panelling is covered with gel-coated fiberglass. Periodic cleaning of the panelling should be done with a mild liquid detergent and a household cleaning wax, such as Pledge.

The safety plate glass windows lend to an open airy feeling throughout the coach. When the windows are open, the screens let in the fresh air and keep the winged pests out. When the windows are closed, the window seals eliminate the problem of airborne outside dirt creeping in.

Power exhaust vents are found in the galley and the bath areas.

The heavy use areas, like countertops and cabinetry, are surfaced with quality high-pressure plastic laminate. It is attractive, tough, scuff resistant, and easily maintained. The cabinetry is functionally designed, with ample storage space for all your needs.

Galley — Your REVCON motorhome has a complete self-contained galley with an array of features that will make cooking a pleasure. A large sliding window with interior screen, will bathe you in sunlight and fresh air. An overhead power exhaust vent keeps the stale air and cooking odors out. You have a 4-burner gas range and oven; some models have a microwave oven also. A double stainless steel sink features a single-throw faucet handle with a faucet tap purifier available, too. A double-door refrigerator/freezer, ice maker, and variable speed blender make for easy food preparation.

Dinette Seating — Dining seating is by the four place, finely upholstered dinette. The table top is covered with high-pressure plastic laminate, for long life and low maintenance. Additional dining seating is available by using the convenient removable table & pedestals which are stored in the rear wardrobe closets. You will find base support plates for the pedestals located on the family room models in front of the convertible sofa.

Convertible Sofa — The color coordinated sofa in the living room area of your coach leads a double life to provide additional sleeping facilities. To convert the sofa to a full size bed: remove the arm pillows, and lift the seat base from the bottom edge rail. Continue to lift until the back cushion support is lying horizontally. Now, push slightly on the rail to allow the seat base to unlock, then simply allow the seat base to arch down. You should now have a full-size bed.

The space under the sofa is recommended for convenient storage of large items. Access is gained by simply removing the front kick board, which is held in place with friction fasteners. Also, access may be gained from the lockable exterior door.

Spirits Cabinet — Across from the sofa is a unique spirits storage cabinet, with placement for your glass wear and liquor bottles. The front swings up and locks into position with a support bracket, serving as an extra table surface.

TV Antenna System — There are two television antenna outlets pre-wired into the coach. One is located just aft of the co-pilot's seat behind the barrel chair. The other is within the rear bedroom on the forward side above the dresser. Your Mini-State TV antenna system is a unique antenna system which has a built-in UHF/VHF color TV antenna in an enclosed housing, with amplifier, power supply, rotate remote control. The built-in rotator lets you pinpoint the antenna elements to every channel for strongest signal. The hand-held remote control features exclusive direction indicator lights that show where the antenna is aimed at all times. A crank inside the galley overhead cabinet raises and lowers the antenna.

Central Vacuum — Your central vacuum system is designed to give you many years of trouble free service. It is precision built, inspected, and tested to assure the highest quality workmanship and reliability.

The vacuum has no cumbersome ON and OFF switches. To start the unit, simply raise the flap on the outlet, insert the hose with a slight twist and the vacuum will be activated. Make sure the dust canister is always connected to the hose before using.

To stop the unit, remove the hose from its outlet and the unit will automatically disengage.

WARNING: Electric shock could occur if the vacuum is used on wet surfaces.

The dust canister is designed to open and empty without fuss and bother. To open, hold the canister over a trash container and twist the lower lid carefully. Empty the bubble and tap the two halves to release any dirt trapped on the filters. The canister can easily be rinsed out. First, make sure both upper and lower filters are removed before you rinse. To remove the filters, grasp the large outer ring in the upper canister half and pull gently toward you until it is free. Lift out the small inner ring from the center of the canister. With the index finger and thumb, grasp the lid filter ring and remove it by pulling gently.

To reposition a new filter, slide the small inner ring onto the red collar and push it all the way in. Next, position the large outer ring on the flange (lip) just below the dust bubble rim. Make sure the ring engages the flange all around the canister. When properly positioned, the large outer ring should rotate freely.

Gacho — The gacho doubles as a sofa on some models, and as an additional bed. To convert the sofa to a guest bed: Grasp the hardwood seat rail and pull toward the center side. Locate the two (2) support legs beneath the base and pull them to a vertical position. Pull the seat cushion toward the rail edge, and allow the attached back cushion to lay back upon the seat base.

Shower — The personal shower is made of color impregnated fiberglass. With this unit it is possible to take a luxurious bath, yet conserve your valuable water supply.



INTERIOR FEATURES (Continued)

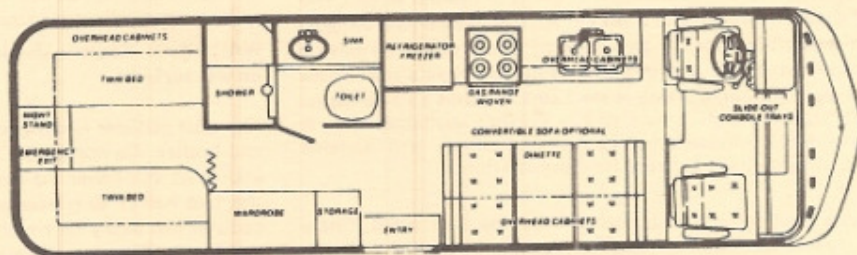
To use the shower, the hot and cold water handles at the center of the shower unit may be adjusted to obtain the desired temperature. The on-off push button on the shower head may be used intermittently. You can remove the shower head from the holder by lifting up from the holding pin. It is important that the shower head is firmly attached to the wall holder, otherwise a sudden movement could cause the head to swing into the fiberglass walls, causing damage.

Switch Panel — Within the bathroom near the counter, there is a panel with switches that control the overhead exhaust fan and water pump. Also, there is a 12-volt receptacle outlet. The bathroom 120-volt outlet and the exterior 120-volt outlet are on a GFI circuit breaker which helps to protect the circuit under wet conditions.

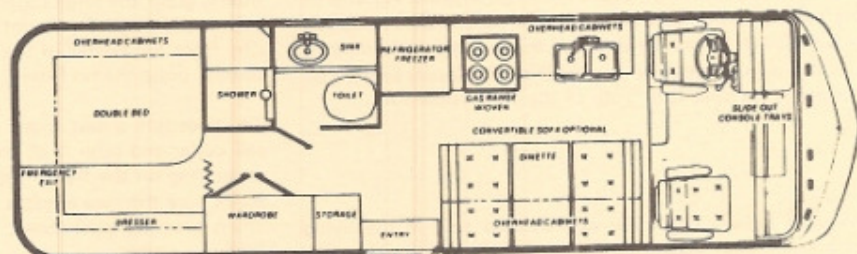
Electronic Ignition Water Heater — On the galley cabinet face is a switch for turning on the water heater.

Entry Step — The power-assisted entry door step will extend when the door is opened and retract when the door is closed. Operation of the power step may be double-checked and/or locked in or out manually from the dashboard control switch. With the ignition OFF, turn the entry step switch ON; the step will automatically actuate to the forward (OUT) position. Close the door and the step will retract. When the ignition switch is turned OFF, the step will lock into its position, whether it is OUT or IN.

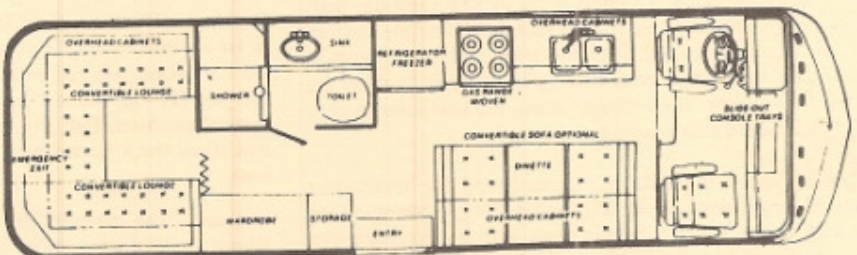
TWIN BED



DOUBLE BED



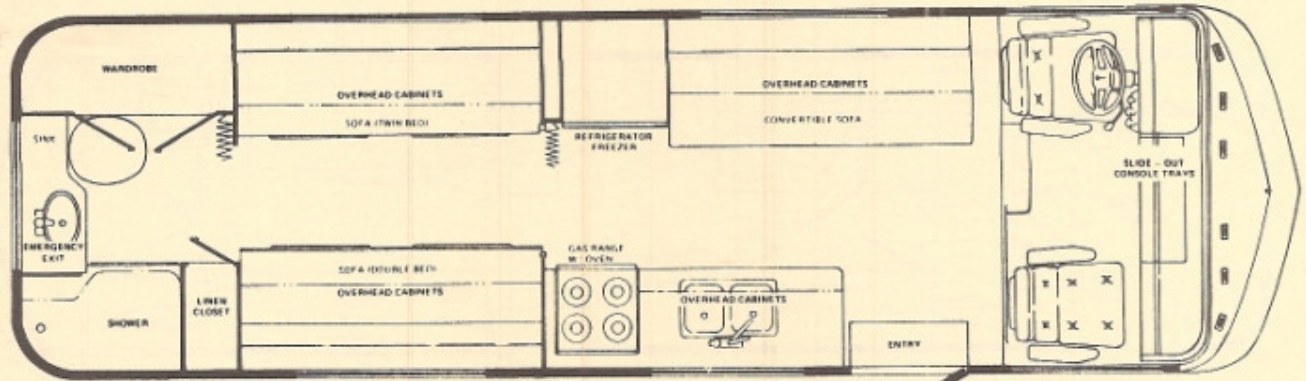
FAMILY ROOM



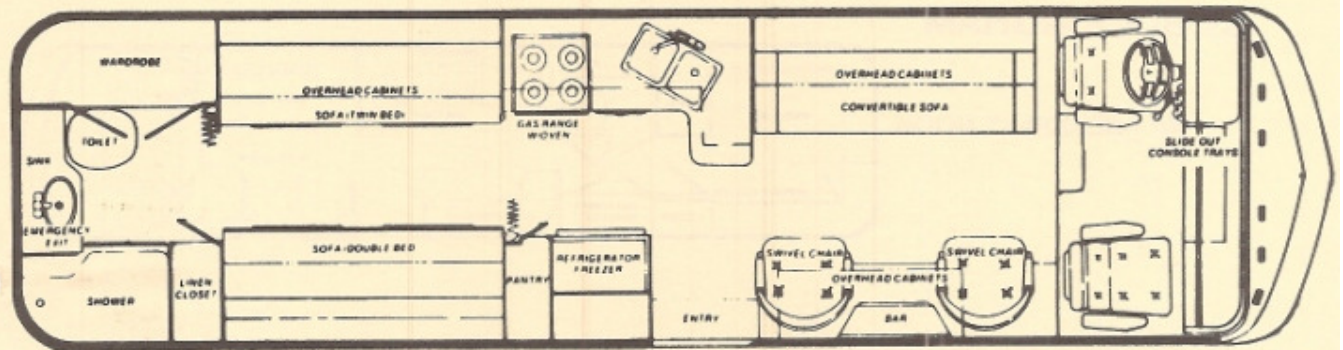
27' HYDE PARK



INTERIOR FEATURES (Continued)

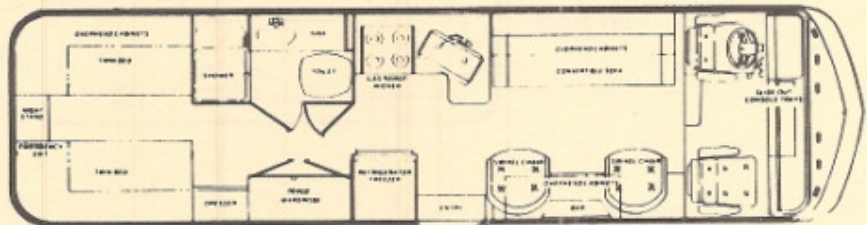


27' NOTTINGHAM

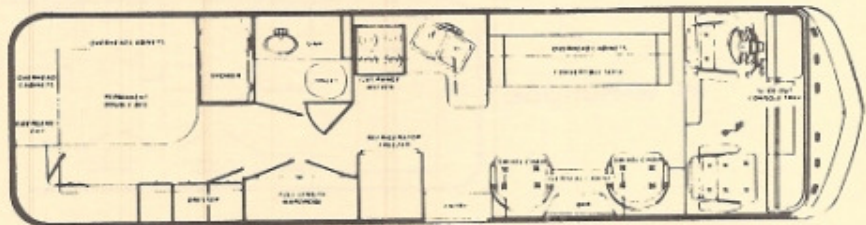


30' BUCKINGHAM

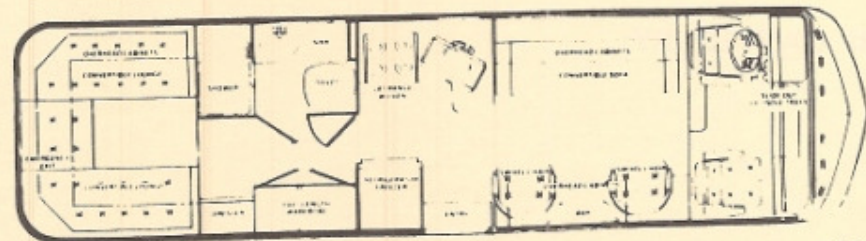
TWIN BED



DOUBLE BED



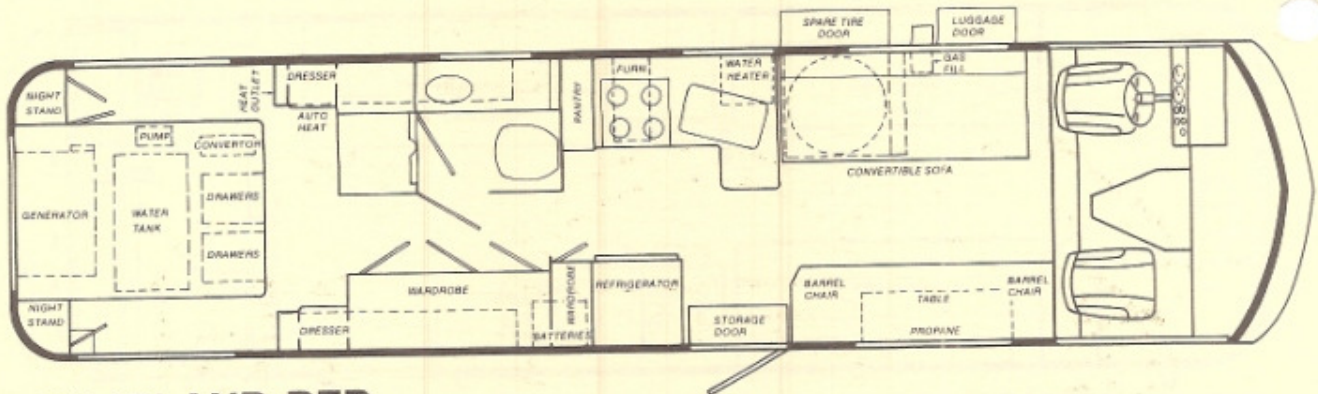
FAMILY ROOM



30' CAMELOT



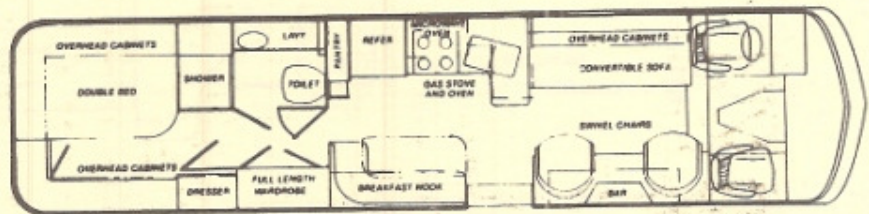
INTERIOR FEATURES (Continued)



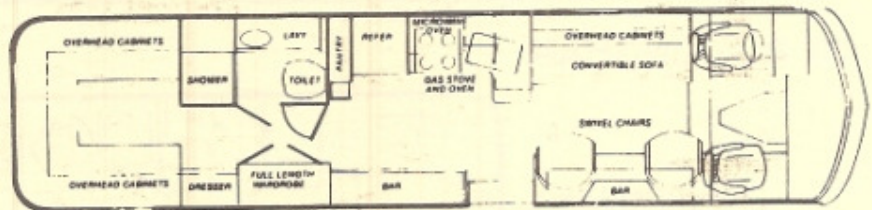
33' ISLAND BED

33' BUCKINGHAM

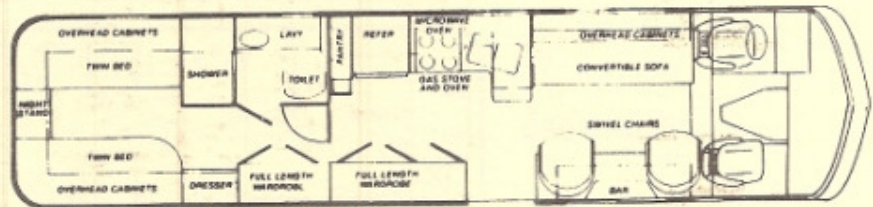
W/ BREAKFAST NOOK



W/ BAR

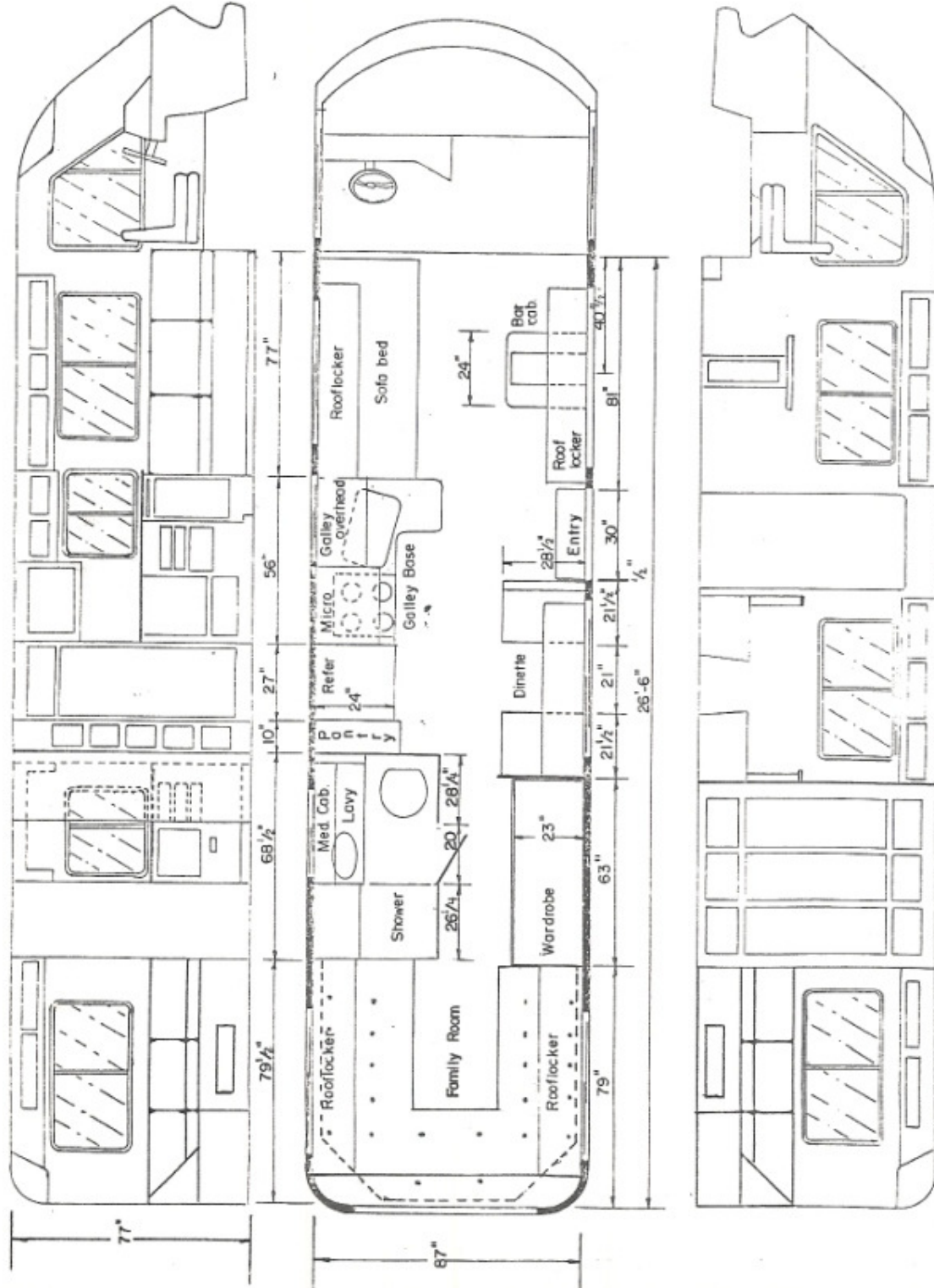


W/ WARDROBE

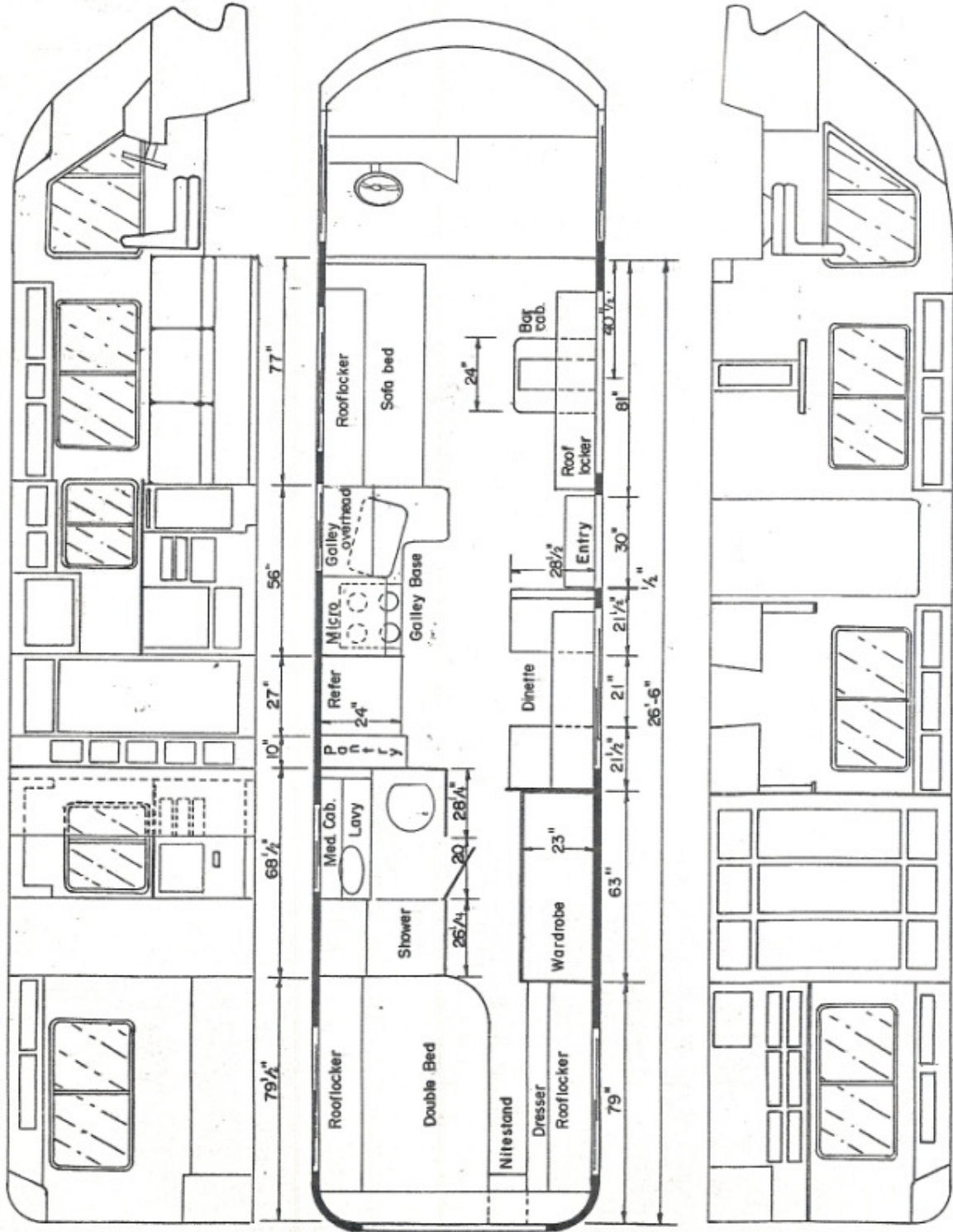


33' CANTEBURY

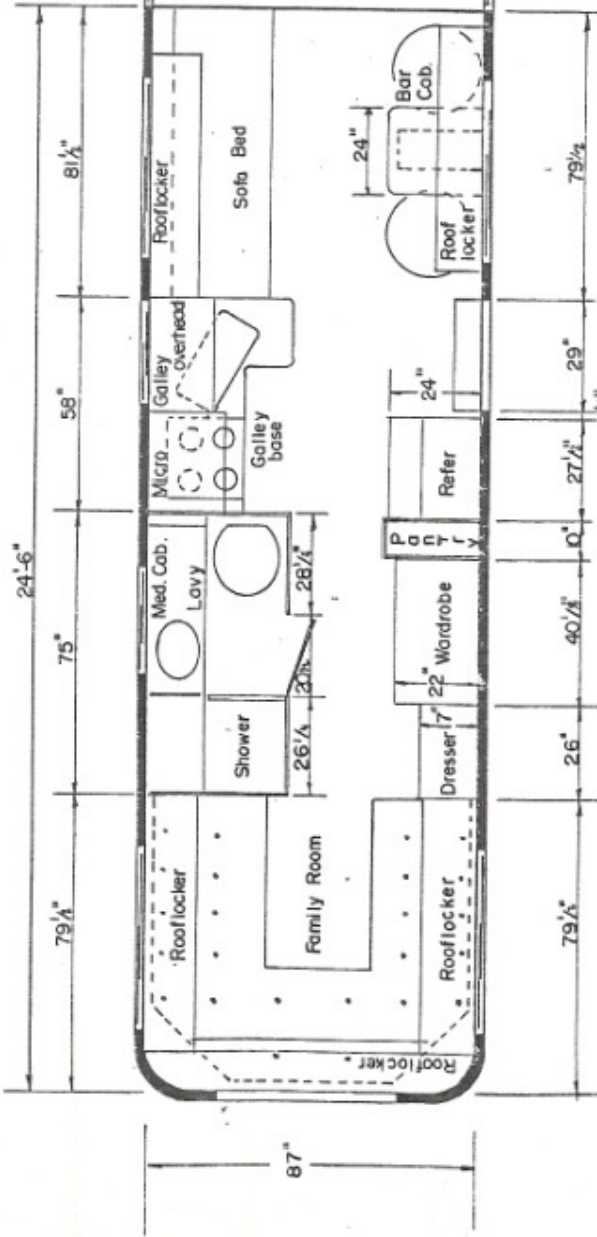
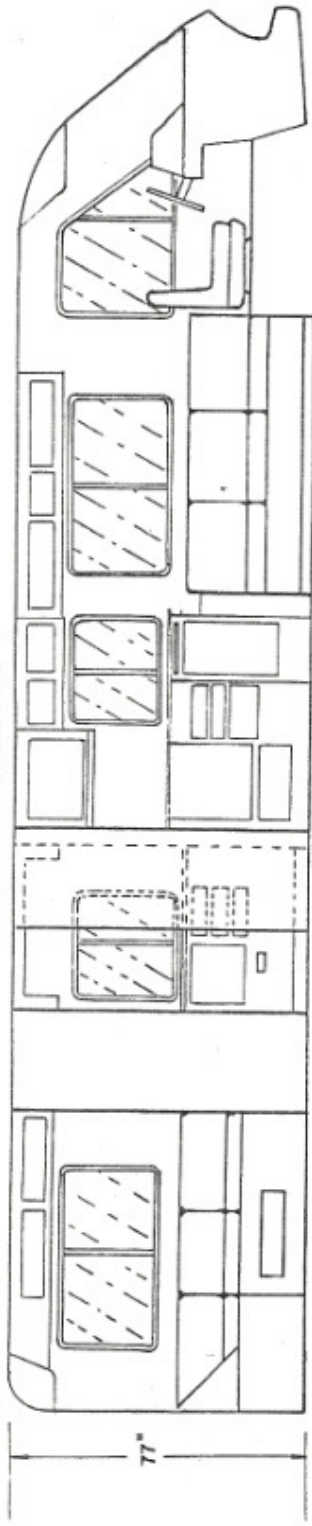
REVCON
 33' KING - MIBBATH
 FAMILY ROOM



REVCON
 33' KING-MIDBATH
 DOUBLE BED

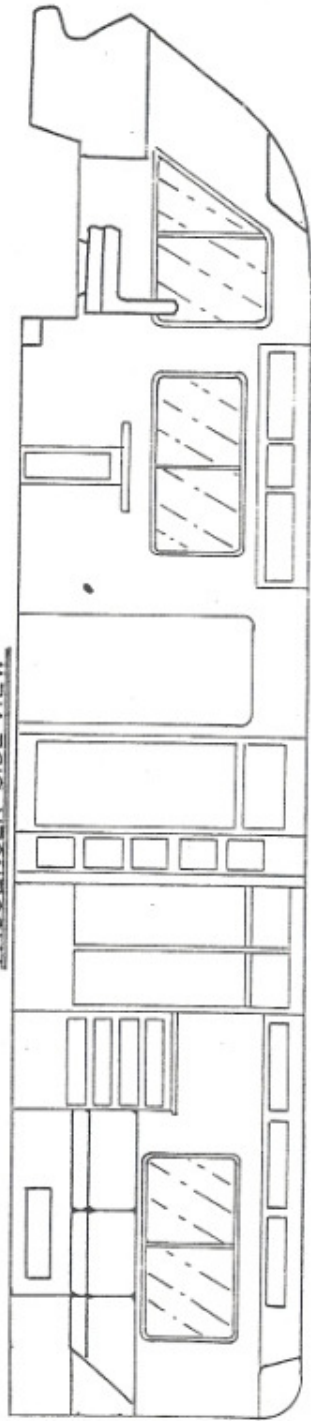


DRIVER SIDE VIEW

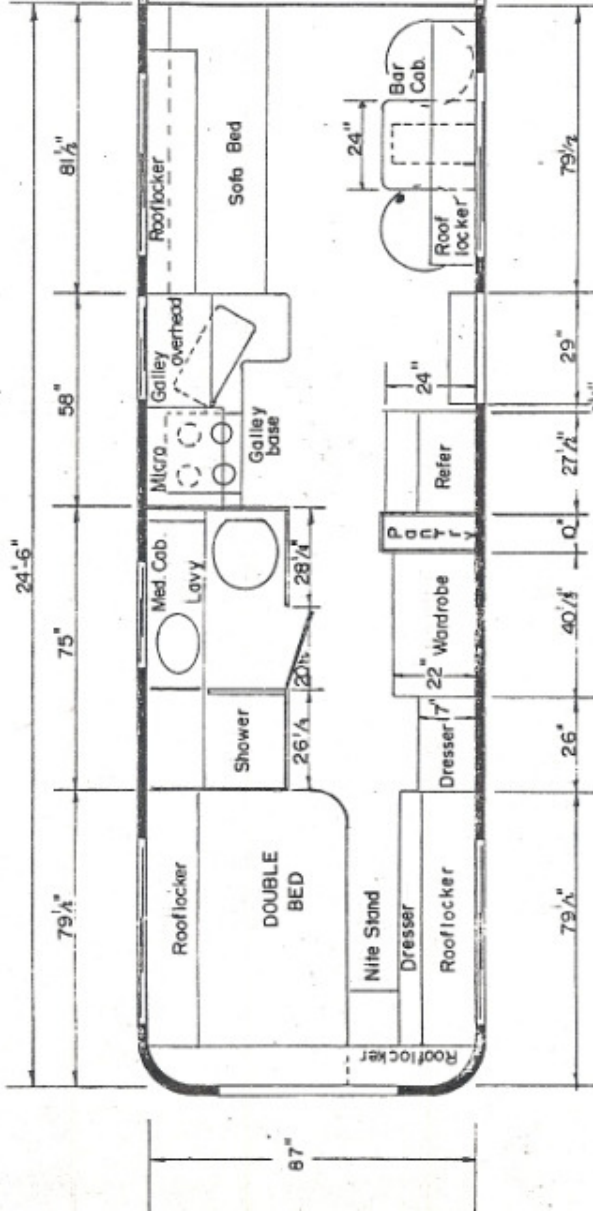
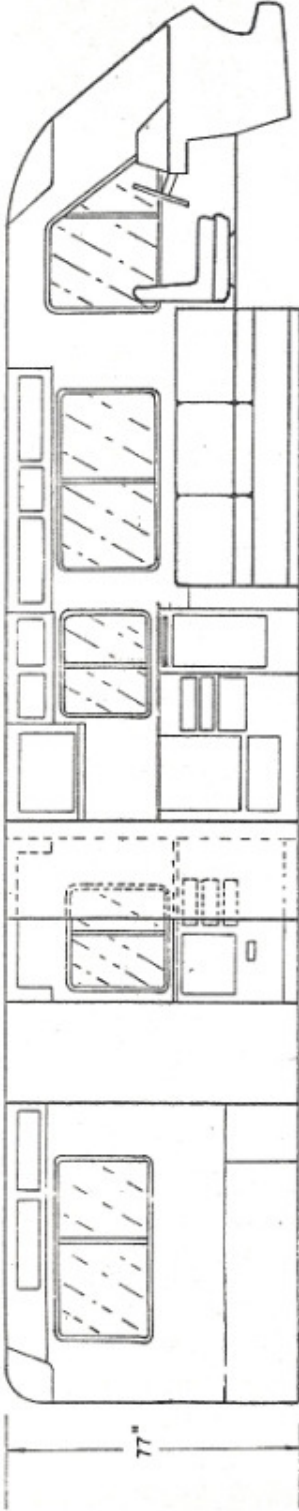


REVCON
31' - PRINCE
FAMILY ROOM

PASSENGER SIDE VIEW

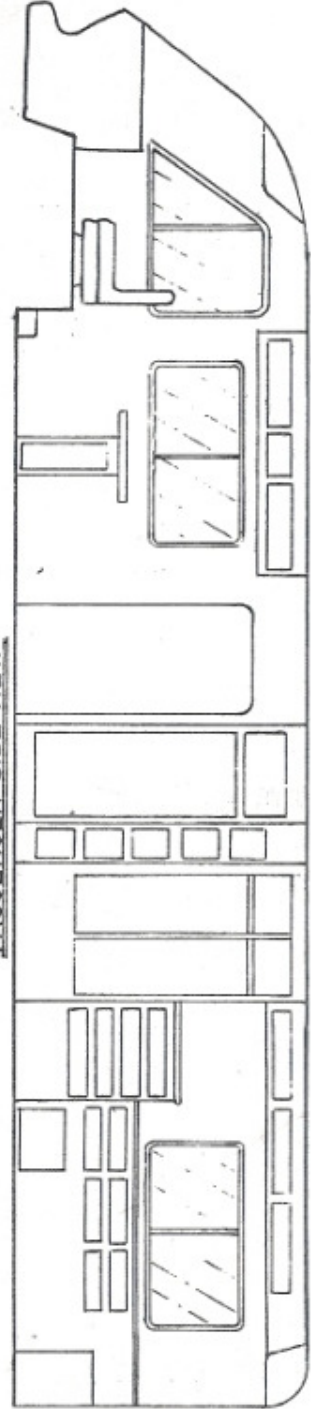


DRIVER SIDE VIEW



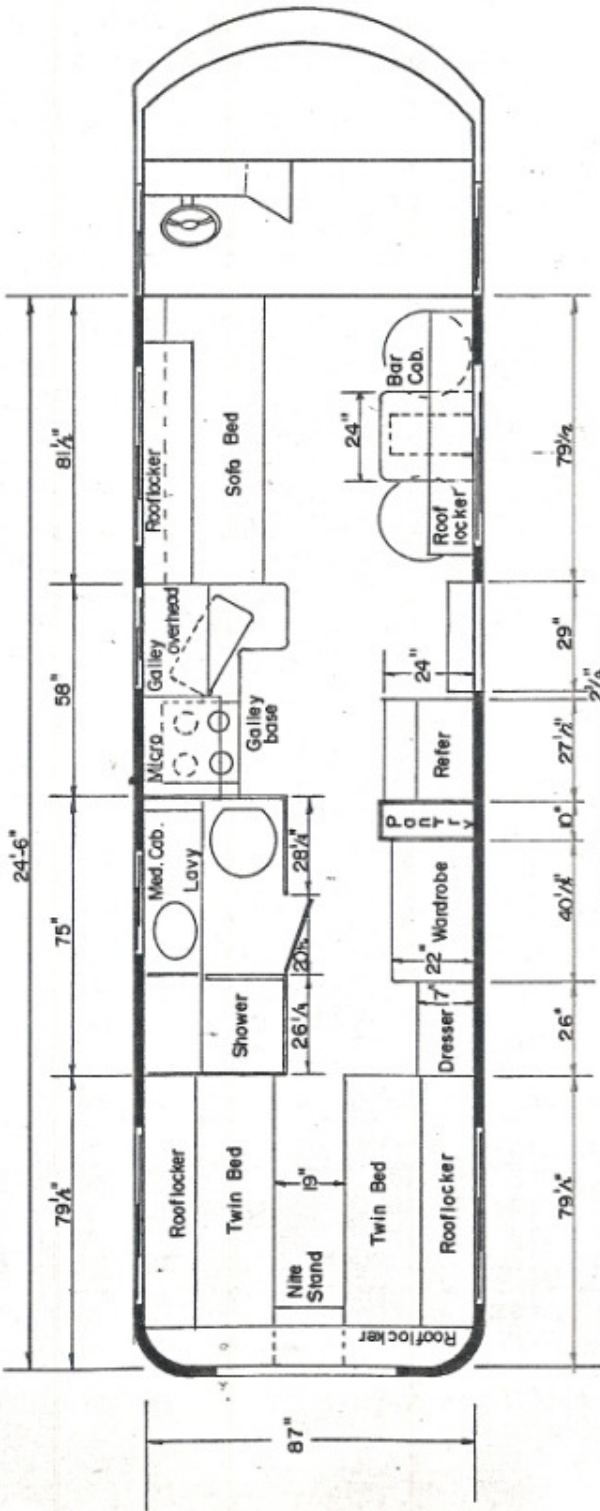
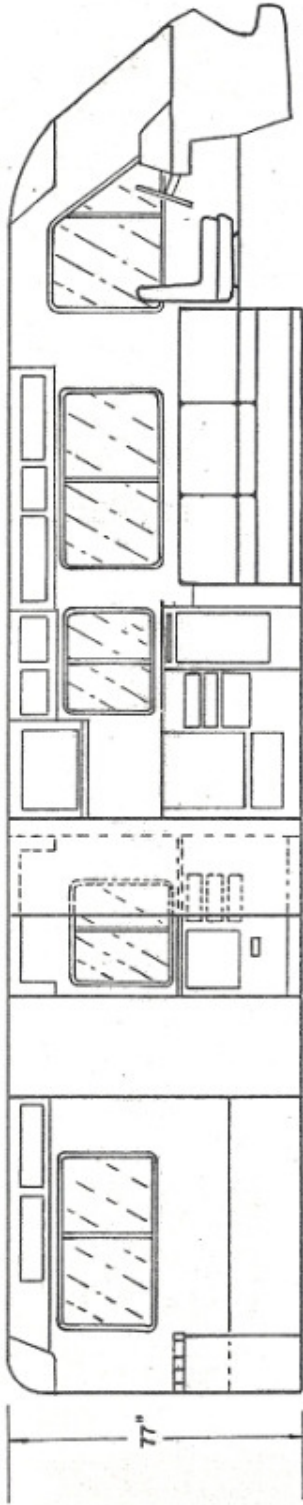
REVCON
31' - PRINCE
DOUBLE BED

PASSENGER SIDE VIEW

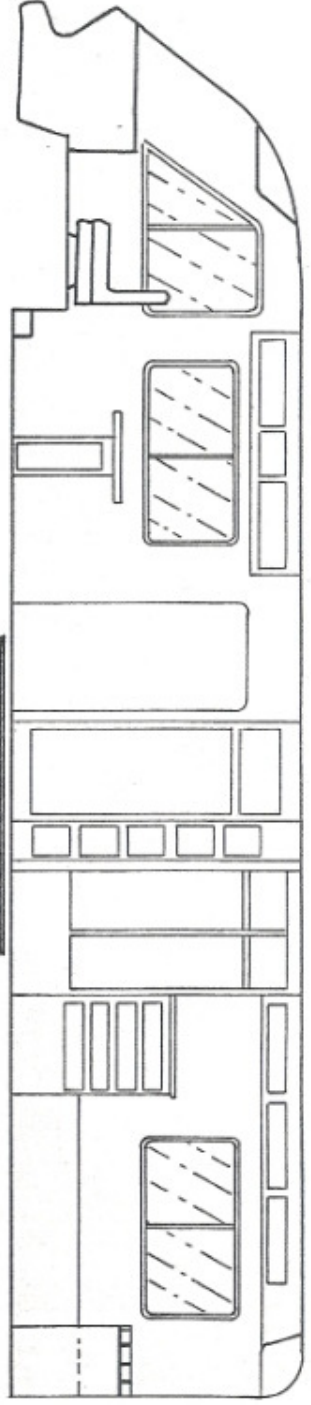


87"

DRIVER SIDE VIEW

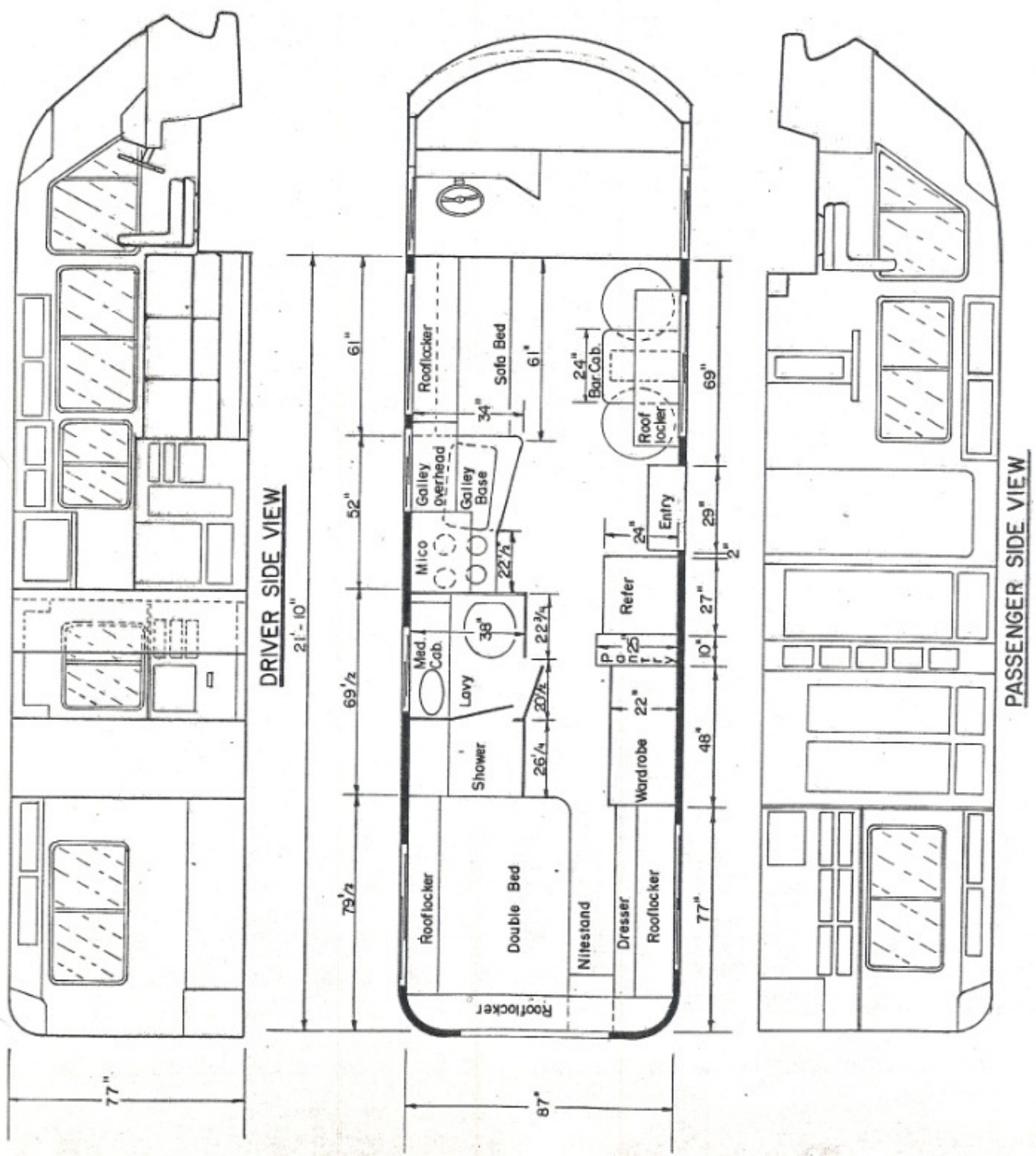


PASSENGER SIDE VIEW

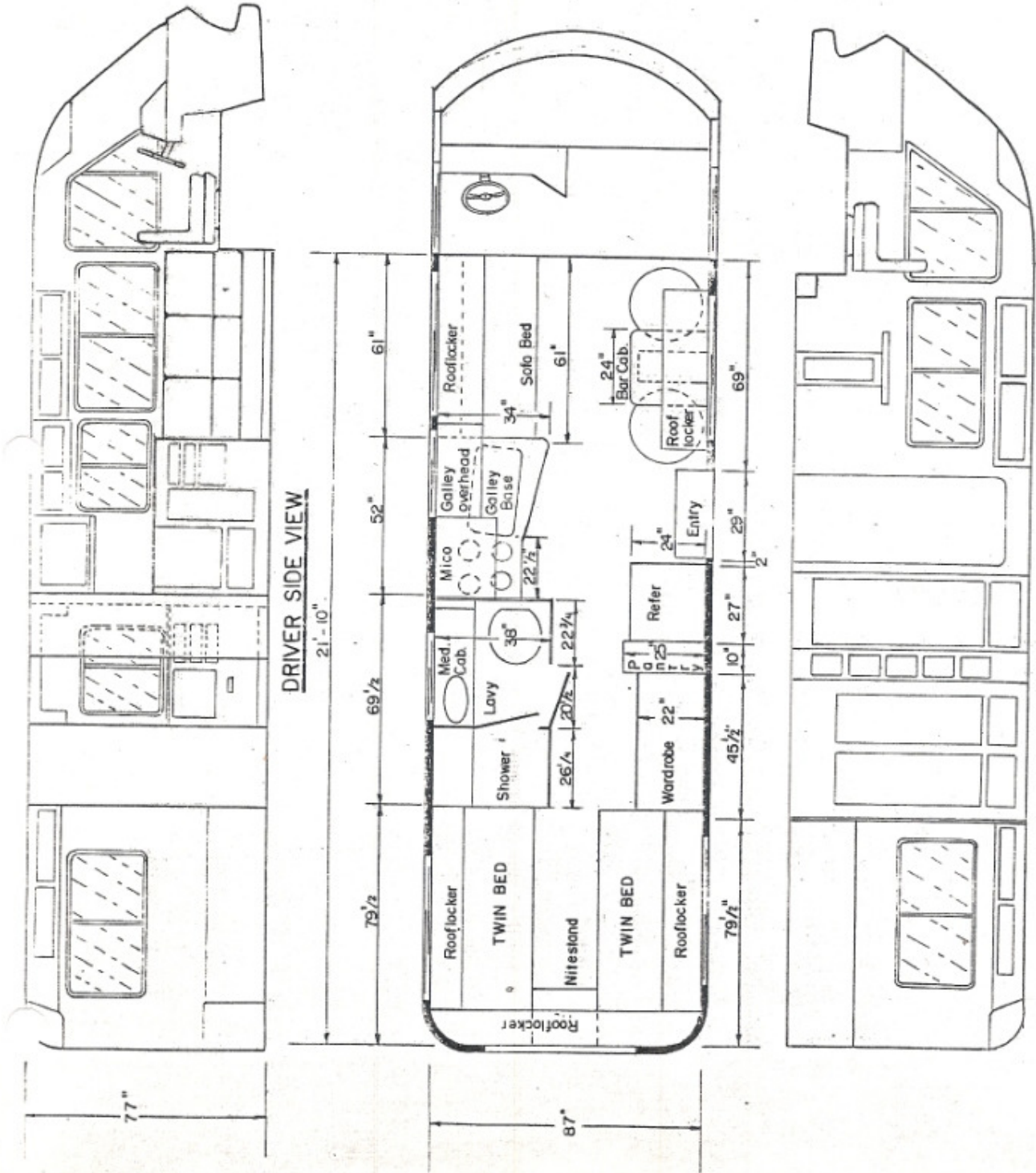


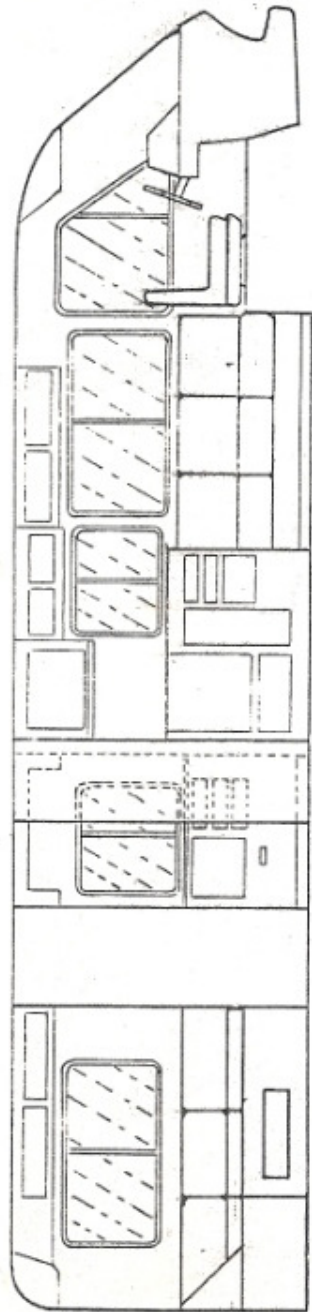
REVCON
31' - PRINCE
TWIN BED

REVCON INC.
28'-DUKE-MIDBATH
DOUBLE BED

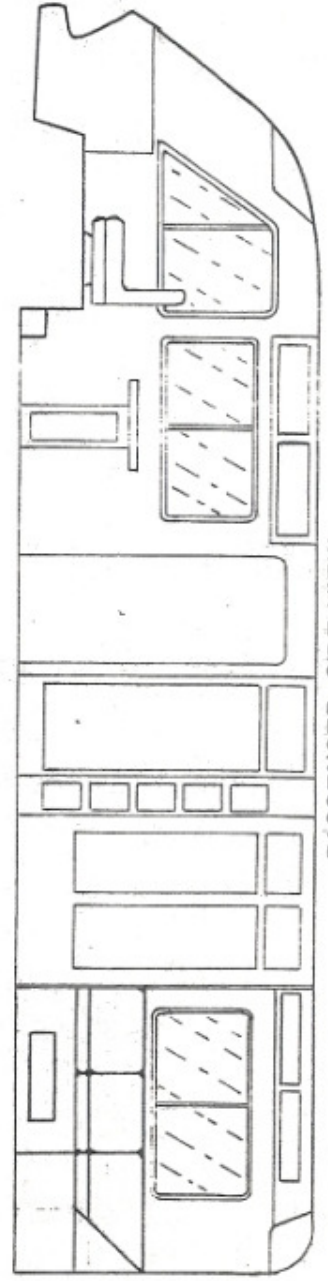
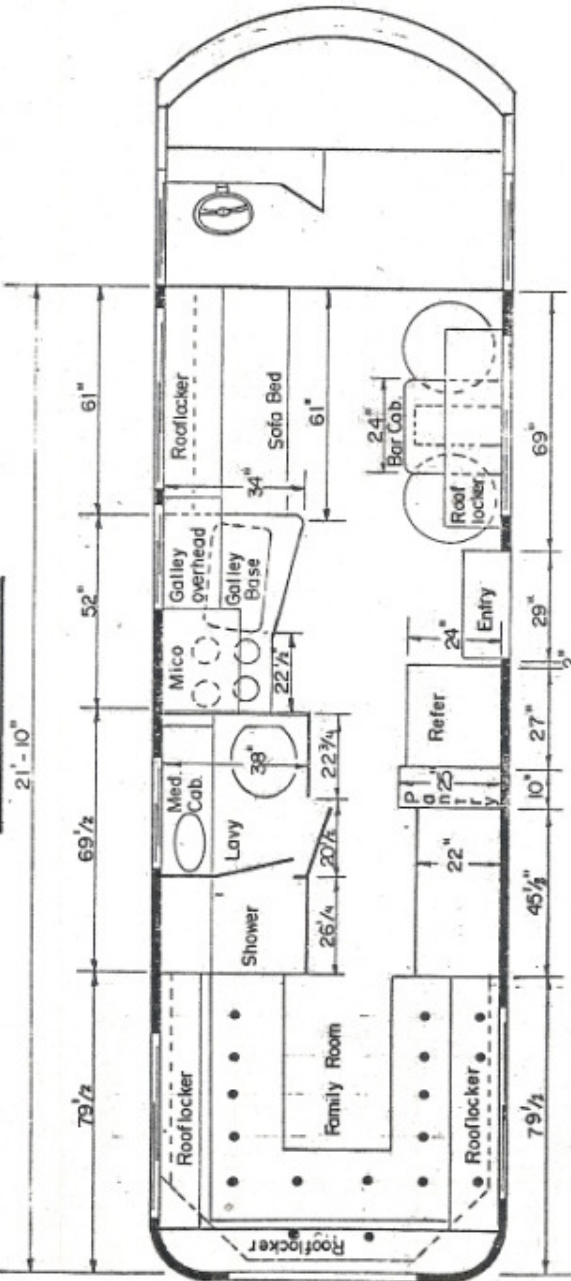


REVCON INC.
28' - DUKE - MIBBATH
TWIN BED





DRIVER SIDE VIEW



PASSENGER SIDE VIEW

REVCON INC.
28'-DUKE - MIDBATH
FAMILY ROOM